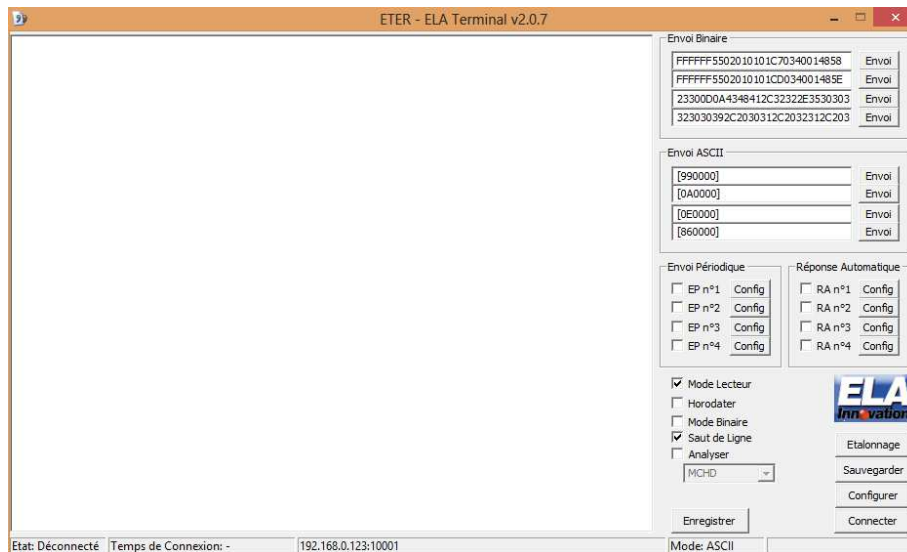


ETER SOFTWARE QUICK START

ELA TERMINAL READER

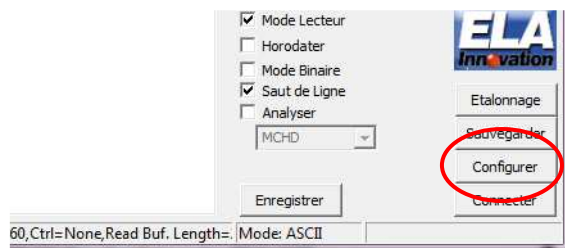




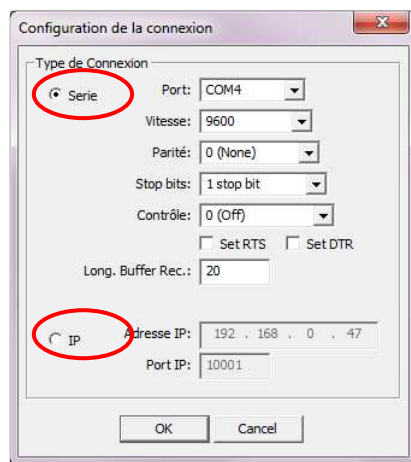
We would like to inform this Quick Start has been based upon an ETER's MMI (Man Machine Interface) in a French version. An English version will be available soon. Until this version is published, we will provide some quick operating indications through this document.

1. COMMUNICATION PORT CONFIGURATION

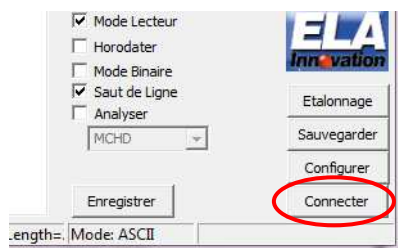
After having opened the ETER software, you have to click on the "CONFIGURER" button.



Depending of the type of SCIEL READER you use, you have the option to configure either the RS232 COM port or the IP port.

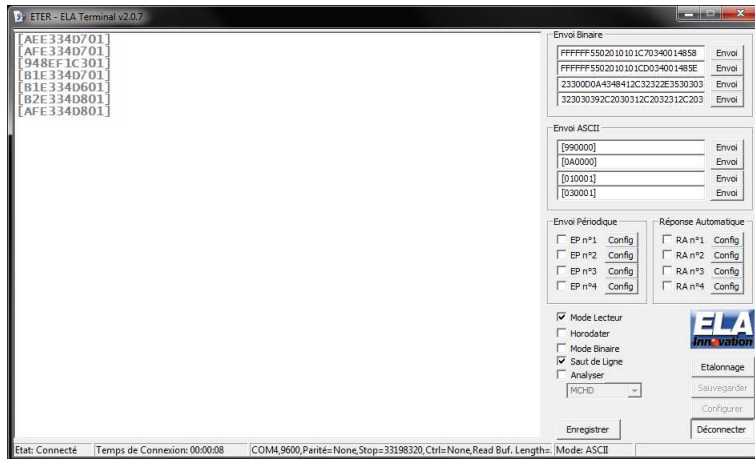


Then you have to click on the « CONNECTER » button to make effective the connexion between your PC and the SCIEL READER device.



After, all the ID's code received will be displayed in the real-time window.

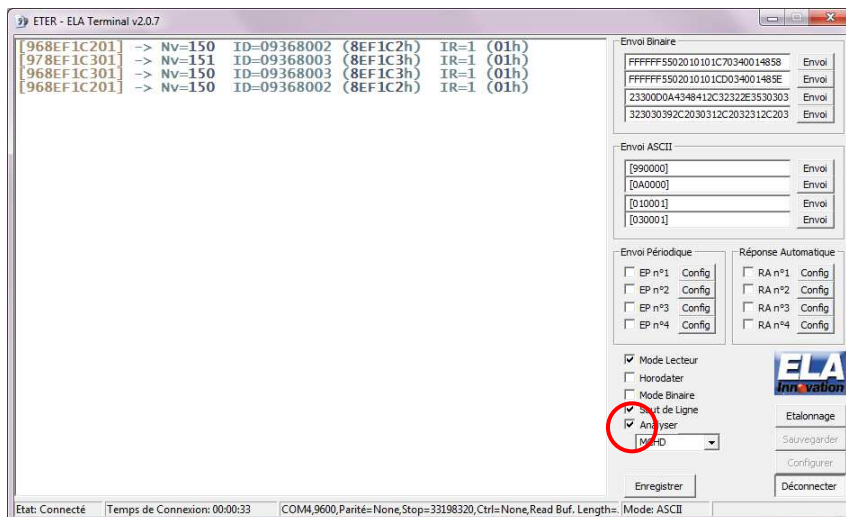
2. HOMEPAGE



Example for reception of ID's codes in the « ON LINE” mode



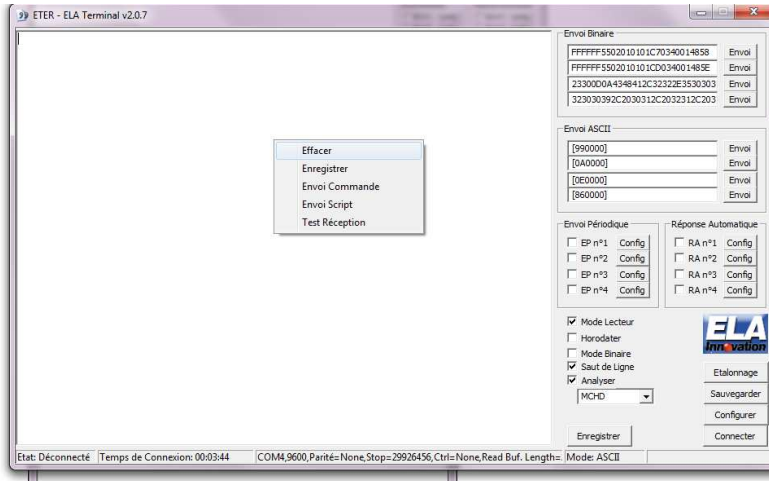
If you want to see all the frame's details in hexadecimal and decimal values, you have to active the check-box "Analyser".



Example for reception of detailed ID's codes with decimal and hexadecimal values (check-box « Analyser » checked)



By right-clicking on the main window, a list of 5 choices appears

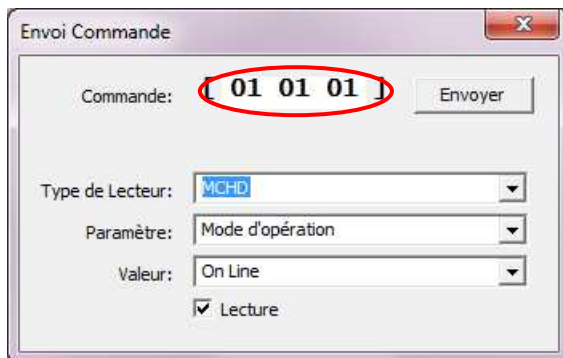


Sending a command :

Please refer to the MCHD Software specifications to know all the commands supported by our SCIEL READER devices. This list can be downloaded from our website www.rfid-ela.eu

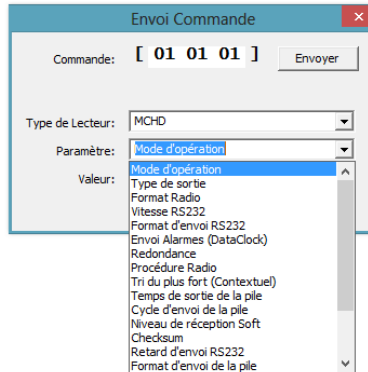
Through the drop-down list, please select the choice "ENVOI COMMANDE".

Then either you fill directly the field "Commande" with the selected programming command.



Or you can also select on the 3 drop-down lists:

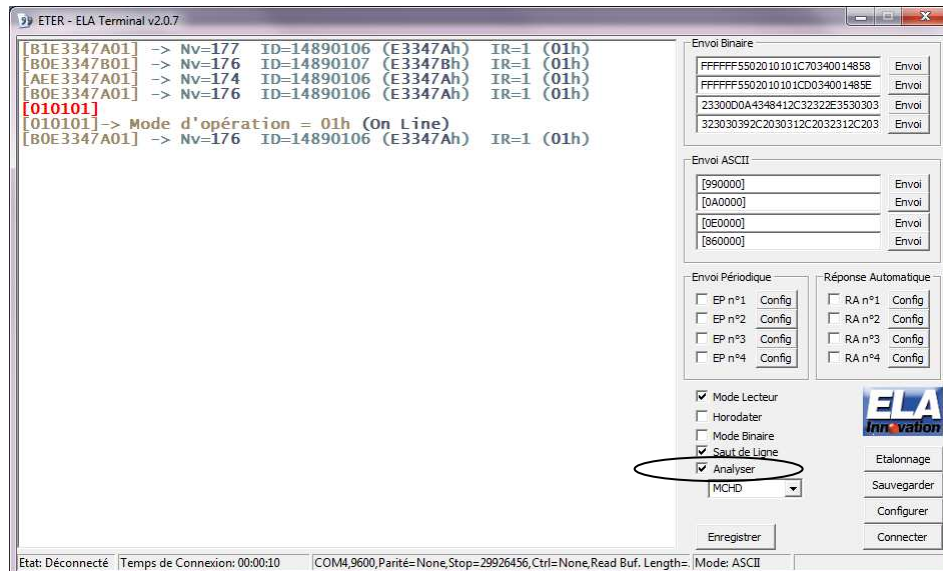
- The type of reader: MCHD for all our SCIEL READER (SCIEL READER R, SCIEL READER WF, SCIEL READER IP, SCIEL CARD) and UTP for our UTP DIFF2 device.
- The type of commands: please refer to the MCHD Software Specifications.



As explained, the interface is still in a French version. For this reason, we advise to fill directly the command code in the field 'Commande:' until this list be translated.

- The Communication mode between the reader and the PC : ON LINE, CONTEXTUAL, PERIODIC CONTEXTUAL, or ON DEMAND CONTEXTUAL

Example: "Operating mode" command



The answer is displayed with details: « On Line », since the check-box "ANALYSER" is activated.