

# Challenge. Solution. Success.



16

PRODUCT  
CATALOGUE

Quality radio  
modems for  
wireless data  
communication  
.....

**SATEL**

Mission-Critical Connectivity

# Solving your challenges

SATEL is one of the world's leading experts and innovators of radio modems for wireless data communication. We are also the first manufacturer that brought wireless router to market.

Our solutions are used in wide range of industrial applications. We are known for our high quality and expertise. All the products are designed and manufactured in Finland.

## Reliable connections, protected business

SATEL radio modems are easy and fast to implement and use, and have low life cycle costs.

The solutions we offer are also expandable, customizable, flexible and secure. You get added value from our services. We offer network design and technical support, and we have a wide distributor network at your service.



**Expertise**  
**High quality**  
**Easy implementation**  
**Independence**

**Operational security**  
**Low life cycle costs**  
**Service and support**  
**Global distribution network**



## SCADA

SCADA system requires a highly reliable monitoring and controlling network. Malfunctions should be pinpointed quickly and even restored remotely. SATEL offers comprehensive solutions that are easy to implement and expand. SATEL radio modems are currently being used e.g. in electricity distribution, electric meter, windmills, waterworks, sewer networks, district heating and gas pipelines.



## Environmental Monitoring

Wireless radio modems are one key aspect in Environmental Monitoring. Radio modems bring safety, operability and control. With SATEL's solutions you can monitor weather conditions and get information for example in flood, fire or drought situation. They provide real-time information of environmental conditions without additional costs and with a minimum supervision.



## ITS

Intelligent Transport Systems are improving travel experience everywhere, and operational communication is a major factor in this. Private radio data network ensures the functionality of these applications. SATEL's radio modems are used in public transport e.g. in traffic light and traffic sign control, real-time passenger information system and automatic vehicle location.



## OEM

SATEL have produced a range of OEM radio modules for system manufacturers to integrate into customer solutions. They are secure, customizable and flexible in mounting options. SATEL's solutions are widely compatible and also support other manufacturers' radio protocols.



## GNSS

Accurate and up-to-date data transfer in precise positioning systems is vital. With radio modems the information is transferred wirelessly in real time. SATELLINE radio modems are used in GNSS RTK, remote measurement and control applications. They provide an independent solution based on quality, continuity and low life cycle cost. SATELLINE modems are used both separately and also as integrated into measurement devices.

# The heart of the SATELLAR XPRS solution

SATELLAR IP radio modem is an excellent choice for data transfer for mission-critical applications requiring long range and the benefits of the privately owned networks.

The heart of the SATELLAR XPRS solution, the SATELLAR IP radio modem provides high availability connections with device and routing protection. The SATELLAR XPRS solution utilizes the interoperability of the SATELLAR radio modem with other communications technologies, as well as technology switchovers.

# SATELLAR



SATELLAR radio modem is suitable for both serial and IP data networking in UHF frequencies. It provides a reliable data connectivity for applications that require stability, high availability and long range. It supports low latency networking and has easy remote management with intuitive user interface.

The SATELLAR consists of two separate modules, a radio unit and central unit. The radio unit alone can be used as a serial data radio modem and as a repeater in packet routing networks. When central unit is added to the radio unit, full TCP/IP functionality is obtained. Features such as remote monitoring & management, SNMP, NTP, data compression and serial data encapsulation provide a complete digital solution that takes into account all data transfer scenarios.



SATELLAR XT 5R



SATELLAR XT 5RC



SATELLAR XT 5RC w. DISPLAY

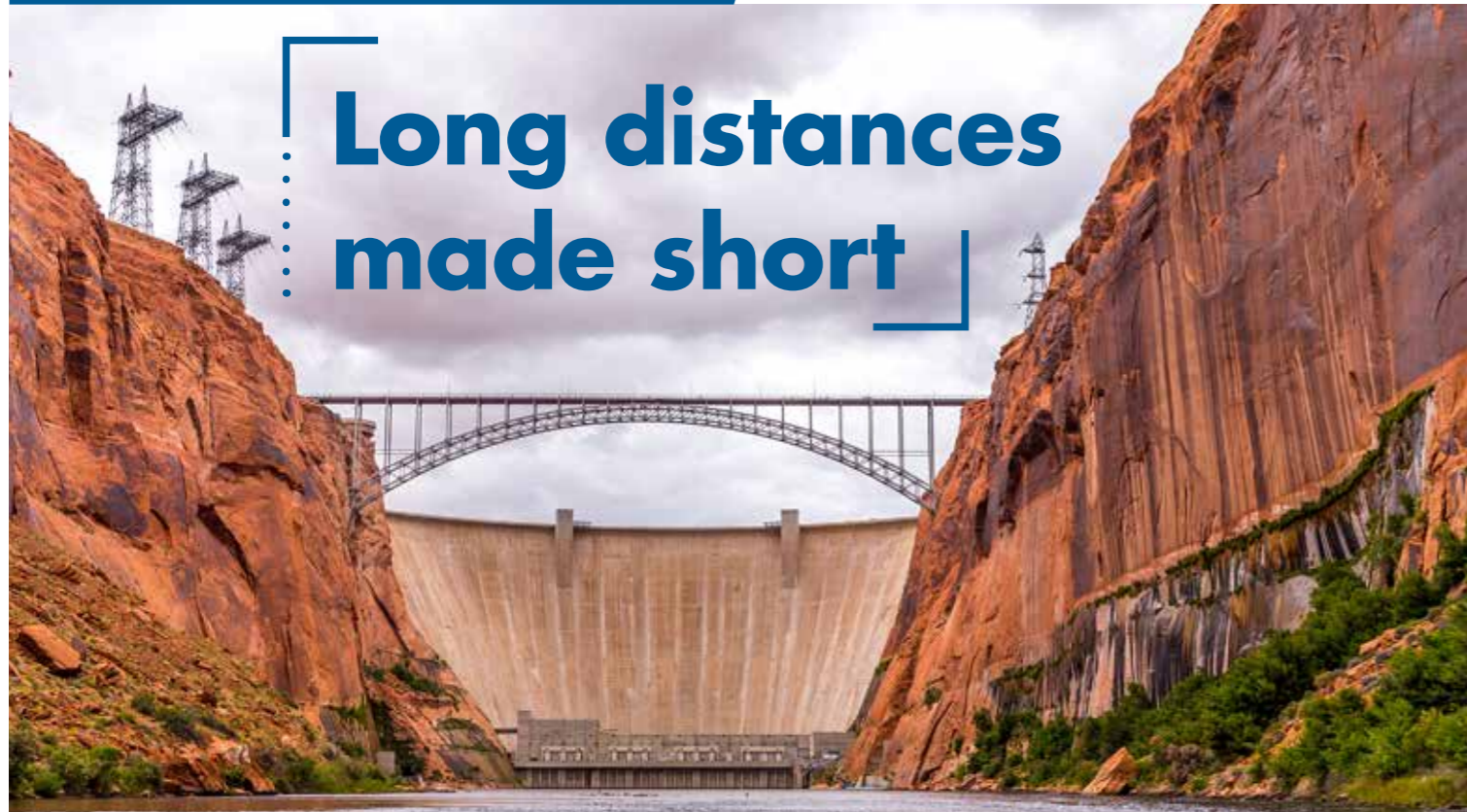
	XT 5R (FSK)	XT 5RC (FSK)	XT 5R (QAM)	XT 5RC (QAM)
SATELLAR order code with display	YF0100	YF0110 YF0120	YF0200	YF0210 YF0220
Frequency MHz	320-365 360-405 400-445 440-485 480-520			320-365* 360-405* 400-445 440-485* 480-520*
Tuning range	45 MHz			
Channel width (programmable)	12.5 kHz / 25 kHz / 150 kHz		6.25 kHz / 12.5 kHz / 25 kHz	
Data speed radio ( max. )	38.4 kbs @ 25 kHz (16FSK) 230 kbps @150 kHz (16FSK)		121 kbps @ 25 kHz (64QAM)	
RX sensitivity (BER 10E-6)	-94 dBm @ 25 kHz (16FSK) -84dBm @150 kHz (16FSK)		-100 dBm @ 25 kHz (64QAM)	
TX power (nominal)	37 dBm (5 W)		37 dBm (5 W) mean: average 30 dBm (1 W), max 32 dBm (1.5 W) PEP: average 37 dBm (5 W), max 38 dBm (6.6 W)	
Interface	RS-232, -422 / -485	RS-232, -422 / -485, USB, Ethernet	RS-232, -422 / -485	RS-232, -422 / -485, USB, Ethernet
Operating voltage	+ 10.6 Vdc ... +30 Vdc		+ 10.6 Vdc ... +30 Vdc	
Power consumption without display TX / RX with display TX / RX	17.9 W / 2.8 W	19.3 W / 4.2 W 19.9 W / 4.8 W	14.4 W / 3.8 W	15.8 W / 5.2 W 16.4 W / 5.8 W

\*) Ask the availability

PRBS (Pseudorandom Binary Sequence), measured with 30 V add 2.5 W for connected USB devices

Long range	VLAN	SATEL NMS	Bridge mode	NETCO	Redundant routing	SNMP monitoring	Radio data up to 230 kbps
Modular construction	Firewall	Secured connectivity	0.1-5 W TX-power	Interoperability	Serial over IP	Cyber security	UHF

# Long distances made short



## SATELLINE-3AS VHF

SATEL order code	YM5000
SATELLINE-3AS VHF	YM5010 ( with display )
SATELLINE-3ASd VHF	YM5020 ( with cooling part )
SATELLINE-3AS VHF C	YM5030 ( with display and cooling part )

Frequency MHz	135...174 / 218...238
Tuning range MHz	135...155, 138...160, 155...174, 218...238
Channel width kHz	12.5 / 25 fixed
RX sensitivity	-115 dBm
TX power ( max. )	5 W
Interface	RS-232, -422, -485
Operating voltage	+9 ... +30 Vdc
Power consumption TX / RX	6.6 W @ 1 W, 22 W @ 5 W / 1,7 W
Data speed ( max. ) radio / serial	19200 bps / 38400 bps

## \* Network Management System

SATEL NMS software can be used to set up a new radio modem network or modify an existing one. It is also an excellent tool for monitoring the condition of the radio network, and by setting different alarm levels it enables immediate reactions.

- Graphical tool for designing a radio network
- Enhanced reliability through advance indication of anticipated faults and failures
- Reduced configuration and maintenance costs through remote configuration
- Flexibility in adapting to customer protocols and applications



YM5000



YM5010



YM5020



YM5030

## SATELLINE-3AS NMS

SATEL order code	YM1070
SATELLINE-3AS NMS	YM1075 ( with display )
SATELLINE-3ASd NMS	
Frequency MHz	330 ... 470
Tuning range	±2 MHz from central freq.
Channel width kHz	12.5 / 20 / 25 fixed
RX sensitivity	-115 dBm
TX power ( max. )	1 W
Interface	RS-232, -422, -485
Operating voltage	+9 ... +30 Vdc
Power consumption TX / RX	6 W / 1.4 W
Data speed ( max. ) radio / serial	19200 bps / 38400 bps



YM1070

YM1075

## SATELLINE-3AS Epic NMS

SATEL order code	YM3010 *
SATELLINE-3AS Epic NMS	YM3012 ( w. cooling part )*
SATELLINE-3AS Epic C NMS	YM3014 ( Dual Band )
SATELLINE-3AS Epic NMS DB	YM3016 ( Dual Band w. cooling part )
SATELLINE-3AS Epic NMS DB C	YM3017 ( Dual Band w. display and cooling part )
SATELLINE-3ASd Epic NMS DB C	
Frequency MHz	412.5 ... 427.5 and 442.5...457.5
Tuning range	±2 MHz from central freq.
Channel width kHz	12.5 / 20 / 25 fixed
RX sensitivity	-115 dBm
TX power ( max. )	10 W
Interface	RS-232, -422, -485
Operating voltage	+11.8 ... +30 Vdc
Power consumption TX / RX	36 W / 1.6 W
Data speed ( max. ) radio / serial	19200 bps / 38400 bps
Notes	Diversity reception * Frequency MHz 330 ... 470



YM3010 / YM3014



YM3012 / YM3016



YM3017

# Meeting your needs

SATELLINE-EASy is equipped with wide tuning range and programmable channel spacing. It provides a compact and flexible solution for many different long-range applications. Wide tuning range and channel spacing are both easy to modify. The radio modem endures temperature changes from -25°C to +75 °C, and has a low power consumption.

SATELLINE-3AS Epic DB includes a high power (10W) transmitter and two receivers that improve the reliability of the connection when there are a lot of reflections and fading. The distances between two modems can be more than doubled with this model.



## SATELLINE-EASy

SATEL order code	YM6500 YM6550 ( with display )
Frequency MHz	330 ... 420 / 403 ... 473
Tuning range MHz	90 / 70
Channel width kHz	12.5 / 20 / 25 programmable
RX sensitivity	-114 dBm
TX power ( max. )	1 W
Interface	Port1: RS-232 fixed Port2: LV-TTL or TTL or RS-232/-422
Operating voltage	+3 ... +9 / +6 ... +30 Vdc
Power consumption TX / RX	7 W / 1.2 W
Data speed ( max. ) radio / serial	19200 bps / 38400 bps



YM6500

YM6550

## SATELLINE-3AS Epic DB

SATEL order code	YM3004 YM3006 ( with cooling part ) YM3007 ( with display and cooling part )
Frequency MHz	3975 ... 470
Tuning range	±2 MHz from central freq.
Channel width kHz	12.5 / 20 / 25 fixed
RX sensitivity	-115 dBm
TX power ( max. )	10 W
Interface	RS-232, -422, -485
Operating voltage	+11.8 ... +30 Vdc
Power consumption TX / RX	32 W / 1.6 W
Data speed ( max. ) radio / serial	19200 bps / 38400 bps
Notes	Diversity reception



YM3004

YM3006

YM3007

# The world is open



## SATELLINE-EASy 869

SATEL order code	YM6501
SATELLINE-EASy 869	YM6551 ( with display )
SATELLINE-EASy 869	
Frequency MHz	869.4125 ... 869.6375 (865 ... 867 for India)
Channel width kHz	25
RX sensitivity	-111 dBm
TX power ( max. )	500 mW (1 W for India)
Interface	RS-232, -422
Operating voltage	+6 ... +30 Vdc
Power consumption TX / RX	3.8 W / 1.2 W
Data speed ( max. ) radio / serial	19200 / 38400 bps



YM6501

YM6551



Power consumption  
SATELLINE-1870E

## SATELLINE-1870E

SATEL order code	YM4010
SATELLINE-1870E	
Frequency MHz	869.4125 ... 869.6375 (865 ... 867 for India)
Channel width kHz	25
RX sensitivity	-108 dBm
TX power ( max. )	500 mW (1 W for India)
Interface	RS-232
Operating voltage	+8 ... +30 Vdc
Power consumption TX / RX	3.8 W / 1.2 W
Data speed ( max. ) radio / serial	9600 / 19200 bps

INPUT VOLTAGE (V)	OPERATION MODE (typical values)					
	Receive (mA)	Transmit on different power levels (mA)			Power save (mA)	Stand-by (µA)
		500 mW	100 mW	5 mW		
8	136	444	244	168	25	55
12	89	296	166	105	19	62
30	40	128	76	47	13	1717

# Defying all challenges



SATEL Compact-Proof is particularly well suited for outdoor use (land surveying, for instance) under varying weather conditions.

The lithium-ion battery provides a long-lasting performance and plenty of operating hours. The operating time in +25°C is more than 15 h.



## Licence free radio modem

### SATEL Compact-Proof (869 MHz)

SATEL order code	YM6575 with battery YM6576 w/o battery
Frequency MHz	869.4125 ... 869.6375
Tuning range	0.25 kHz
Channel width kHz	25
RX sensitivity	-111 dBm
TX power ( max. )	0.5 W
Interface	RS-232
Operating voltage	+9... +16 Vdc
Power consumption TX / RX When idle ( no charging and modem off )	7 W / 1.2 W 6 mW
Data speed ( max. ) radio / serial	19200 bps / 38400 bps

## IP67 radio modem

### SATEL Compact-Proof

SATEL order code	YM6570 with battery YM6571 w/o battery
Frequency MHz	330... 420 / 403...473
Tuning range	90 / 70 MHz
Channel width kHz	12.5 / 20 / 25 programmable
RX sensitivity	-114 dBm
TX power ( max. )	1 W
Interface	RS-232
Operating voltage	+9... +16 Vdc
Power consumption TX / RX When idle ( no charging and modem off )	7 W / 1.2 W 6 mW
Data speed ( max. ) radio / serial	19200 bps / 38400 bps

## BATTERY for SATEL Compact-Proof

Capacity and type	7.2 V, 8700 mAh, Li-Ion	
Charging current ( max. )	1.6 A	
Charging time ( empty to full )	5.5 h @ +25 °C	
Charging voltage	+9... +16 Vdc	
Max. time of operation	+ 60 °C ( 1 W )	13.8 h
	+ 60°C ( 50% TX / RX ratio 1 W )	22.2 h
	- 20 °C ( 1 W )	10.5 h
	- 20 °C ( 50 % TX / RX ratio 1 W )	16.9 h
	- 20 °C RX	44 h

### SATELLINE-3ASd Epic Pro DB

SATEL order code	YM3020
Frequency MHz	397.5 ... 412.5
Tuning range MHz	±2 from central freq.
Channel width kHz	12.5 / 20 / 25 fixed
RX sensitivity	-115 dBm
TX power ( max. )	10 W
Interface	RS-232
Operating voltage	+11.8 ... +30 Vdc
Power consumption TX / RX	32 W / 1.6 W
Data speed ( max. ) radio / serial	19200 bps / 38400 bps



### SATELLINE-EASy Pro

SATEL order code	YM6803
Frequency MHz	403 ... 473
Tuning range MHz	70
Channel width kHz	12.5 / 20 / 25 programmable
RX sensitivity	-114 dBm
TX power ( max. )	35 W ( 25 W as an order option )
Interface	RS-232
Operating voltage	+9 ... +16 Vdc ( ≥ +12 Vdc @ 35 W )
Power consumption TX / RX	110 W / 1.8 W
Data speed ( max. ) radio / serial	19200 bps / 38400 bps



### IP69K radio modems

When it gets tough

### SATEL EASy-Proof

SATEL order code	YM6580
Frequency MHz	330 ... 420 / 403 ... 473
Tuning range MHz	90 / 70
Channel width kHz	12.5 / 20 / 25 programmable
RX sensitivity	-114 dBm
TX power ( max. )	1 W
Interface	RS-232
Operating voltage	+6 ... +30 Vdc
Power consumption TX / RX	7 W / 1.2 W
Data speed ( max. ) radio / serial	19200 bps / 38400 bps

Note

Interface connector: Deutsch DT04-6P-CL09



### SATEL EASy-Proof

Sealed housing and connectors to ensure the functionality even under extremely harsh environmental conditions.



### SATELLINE-M3-R3

SATEL order code	YM6900
Frequency MHz	403 ... 473
Tuning range MHz	70
Channel width kHz	12.5 / 25 programmable
RX sensitivity	-114 dBm
Interface	CMOS-UART
Operating voltage	+4 Vdc
Power consumption RX	0.5 W
Data speed ( max. ) radio / serial	19200 bps / 115200 bps

### SATELLINE-M3-TR3

SATEL order code	YM7000 ( YM7100 w/o AES )
Frequency MHz	403 ... 473
Tuning range MHz	70
Channel width kHz	12.5 / 25 programmable
RX sensitivity / TX power ( max. )	-116 dBm / 1 W
Interface	CMOS-UART
Operating voltage	+4 Vdc
Power consumption TX / RX	4.7 W / 0.73 W
Data speed ( max. ) radio / serial	19200 bps / 115200 bps



Receiver



Transceiver

### SATELLINE-M3-TR4

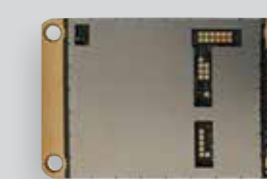
SATEL order code	YM7400 ( YM7410 w/o AES )
Frequency MHz	403 ... 473
Tuning range MHz	70
Channel width kHz	12.5 / 25 programmable
RX sensitivity / TX power (max)	-116 dBm / 1 W
Interface	CMOS-UART
Operating voltage	+4 Vdc
Power consumption TX / RX	4.7 W / 0.73 W
Data speed ( max. ) radio / serial	28800 bps / 115200 bps

### SATELLINE-M3-TR8

SATEL order code	YM7800 ( YM7810 w/o AES )
Frequency MHz	868 ... 870 ( 865 ... 867 for India )
Tuning range MHz	2
Channel width kHz	25
RX sensitivity / TX power (max.)	-112 dBm / 0.5 W ( 1 W for India )
Interface	CMOS-UART
Operating voltage	+4 Vdc
Power consumption TX / RX	4.3 W / 0.875 W
Data speed ( max. ) radio / serial	19200 bps / 115200 bps



Transceiver with 16FSK modulation



Licence free

**SATELLINE-M3 VHF**

SATEL order code	YM6000
Frequency MHz	135...174 / 218...238
Tuning range MHz	135...155, 138...160, 155...174, 218...238
Channel width kHz	12.5 / 25 fixed
RX sensitivity / TX power ( max. )	-115 dBm / 1 W
Interface	RS-232, -422, -485
Operating voltage	+9 ... +30 Vdc
Power consumption TX / RX	6.6 W / 1.7 W
Data speed ( max. ) radio / serial	19200 / 38400 bps

Examples of the customized radio modems.  
Ask your local SATEL distributor about the various options.



**SATELLINE-M3-TR1**

SATEL order code	YM6300
Frequency MHz	330 ... 420 / 403...473
Tuning range MHz	90 / 70
Channel width kHz	12.5 / 20 / 25 programmable
RX sensitivity / TX power ( max. )	-114 dBm / 1 W
Interface	RS-232, -422, LVTTTL, TTL
Operating voltage	+3 ... +9 / +6 ... +30 Vdc
Power consumption TX / RX	3 W @ 0.5 W, 7 W@ 1 W / 1.2 W
Data speed ( max. ) radio / serial	19200 / 38400 bps



**SATELLINE-M3-TR1 869**

SATEL order code	YM6301
Frequency MHz	869.4125 ... 869.6375 (865 ... 867 for India)
Tuning range MHz	0.25 (2 MHz India)
Channel width kHz	25 fixed
RX sensitivity / TX power ( max. )	-111 dBm / 0.5 W (1 W for India)
Interface	RS-232, -422, LVTTTL, TTL
Operating voltage	+6 ... +30 Vdc
Power consumption TX / RX	3.8 W / 1.2 W
Data speed ( max. ) radio / serial	19200 bps / 38400 bps



**For simple I/O and serial communication**

**SATEL-LP24**

SATEL order code	YMo424
Frequency GHz	2.4002 ... 2.4785
Tuning range	FHSS
RX sensitivity / TX power ( max. )	-106 dBm / 100 mW
Interface	T-BUS ( for extension modules ), RS-232, -485
Operating voltage	+19.2 ... +30.5 Vdc
Power consumption ( Max. @ 24 Vdc )	≤ 65 mA
Dataspeed ( max. )	250 kbps



**SATEL-LP9**

SATEL order code	YMo409
Frequency MHz	902 ... 928
Tuning range	FHSS
RX sensitivity / TX power ( max. )	-112 dBm / 1000 mW
Interface	T-BUS ( for extension modules ), RS-232, -485
Operating voltage	+10.8 ... +30.5 Vdc
Power consumption ( Max. @ 24 Vdc )	328 mA
Dataspeed ( max. )	500 kbps



**SATEL-LP8**

SATEL order code	YMo408
Frequency MHz	869.4 ... 869.65
Tuning range	FHSS*
RX sensitivity / TX power ( max. )	-122 dBm / 500 mW
Interface	T-BUS ( for extension modules ), RS-232, -485
Operating voltage	+19.2 ... +30.5 Vdc
Power consumption ( Max. @ 24 Vdc )	≤ 65 mA
Dataspeed ( max. )	120 kbps



\* Depends on topology and air interface data rate.

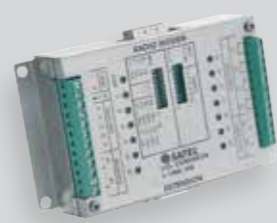
**SATEL-LP I/O EXTENSION MODULES**

Product	SATEL order code	Interfaces
SATEL-LP-DI4	Yl0101	4 x digital inputs (0 ... 250 V AC/DC)
SATEL-LP-DOR4	Yl0102	4 x digital relay outputs (6 A, 24 Vdc / 250 Vac)
SATEL-LP-AI4	Yl0103	4 x analog inputs (0...20 mA / 4 ... 20 mA)
SATEL-LP-AO4	Yl0104	4 x analog outputs (0... 20 mA / 4 ... 20 mA, 0 ... 10 Vdc)
SATEL-LP-DAIO6	Yl0105	1 x analog inputs (0... 20 mA / 4 ... 20 mA) 1 x analog outputs (0... 20 mA / 4 ... 20 mA, 0 ... 10 Vdc) 2 x digital inputs / outputs (0 ... 250 V AC/DC)
SATEL-LP-DI8	Yl0106	8 x digital inputs (0 ... 30.5 Vdc) OR 2 x pulse inputs (0 ... 100 Hz)
SATEL-LP-DO8	Yl0107	8 x digital transistor outputs (30.5 Vdc / 200 mA)
SATEL-LP-PT100	Yl0108	4 x PT 100 resistance thermometer inputs (-50 °C ... +250 °C)



**SATELLINK I/O converters**

\* Extension module for I-LINK



**SATEL i-LINK**

**SATEL I-LINK 100**

**SATEL I-LINK 200**

**SATEL I-LINK 300**

	SATEL order code	Digital I/Os	Analog I/Os 4-20 mA	Pulse counter	Connectors, switches
SATEL i-LINK	Yl0090	2	-	•	Screw conn. / 16-pin 2x8 f / DIP
SATEL i-LINK MB	Yl0095	2	-	•	Screw conn. / 16-pin 2x8 f / DIP
SATEL I-LINK 100	Yl0007	4	2	-	Screw conn. / D15m / D15f / DIP
SATEL I-LINK 100 MB	Yl0017	4	2	-	Screw conn. / D15m / D15f / DIP
SATEL I-LINK 200*	Yl0009	4	2	-	Screw conn. / D15m / D15f / DIP.
SATEL I-LINK 300*	Yl0010	6	-	-	Screw conn. / D15m / D15f / DIP



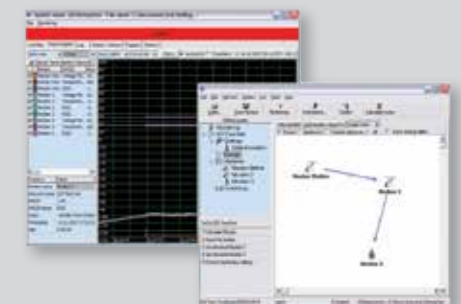


# Software – Ready, steady, go!

(MS Windows compatible)

## SATEL NMS PC

Network Management System software for creating and managing SATELLINE-3AS NMS, -3ASd NMS, -3AS Epic NMS, -3ASd Epic NMS, -3AS VHF, -3ASd VHF and SATELLAR networks, including the graphical design of topology and message routing or repeater functions, remote modification of settings, and logging and trending of field data.



## Configuration Manager

SATEL Configuration Manager (CM) is available for SATELLINE-M3-TR1, -EASy, -EASy Pro, -M3-R3, -M3-TR3, -M3-TR4, -M3-TR8, -EASy 869, -M3-TR1 869, Compact-Proof and EASy-Proof products. The program makes it possible to edit the modem settings and update the firmware.

## Help Editor

Help Editor can be used for creating and editing different language versions for Configuration Manager.

## FCS Monitor

Free Channel Scanning Monitor program can be used for setting the FCS parameters and for loading them to modems and for monitoring the channels for noise or interference.

## Channel List Editor

Channel List Editor program can be used for creating the channel list for Epic Pro modems.

# Antennas & cables

## SaTerm

SaTerm is software, which can be used for configuration, testing, reprogramming and for updating the firmware of the SATELLINE-3AS Epic DB, -3ASd Epic DB, -EASy, -3ASd Epic Pro DB and -EASy Pro radio modems.



## NETCO

NETCO is an intuitive and user friendly network configuration program for SATELLAR. It is designed to make configuration as easy as possible. With NETCO a fully functional communication network can be configured with a few simple clicks. It has SATELLAR-based network commissioning and it can configure large network (up to 5000 devices) without delays.



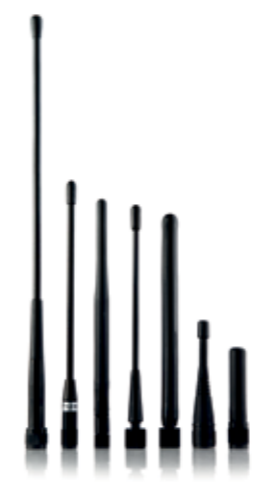
## SATELLINK PC Pro

Point-to-multipoint program for driving SATEL I-LINK and i-LINK I/O-converters. Operate systems, which are connected to the I/O-ports, change values, collect pulses and monitor the radio link. For max. 127 slaves.



## Antennas

- Half Wave Antennas for frequencies 400 ... 470 MHz for short distances
- Quarter Wave Antennas for frequencies 400 ... 470 MHz and 869 MHz for short distances
- Helix Antennas for frequencies 400 ... 470 MHz for short distances
- Directional Antennas for frequencies 330 ... 470 MHz, 869 MHz and 135 ... 174 / 218 ... 238 MHz for long distances
- Omnidirectional Antennas for frequencies 330 ... 470 MHz, 869 MHz and 135 ... 174 / 218 ... 238 MHz for long distances.



## Cables

- CRF-1 RG58 length 1 meter with TNC male / TNC female -connectors
- CRF-5F RG58 length 5 meter with TNC male / TNC female -connectors or CRF-5M TNC male / TNC male -connectors
- ECOFLEX10 low loss (0.9 dB / 10 m) cable for cable lengths over 20 meter with N or TNC -connectors.
- ECOFLEX15 low loss (0.6 dB / 10 m) cable for cable lengths over 20 meter with N -connectors.

**We can also offer wide range of interface cables, for example:**

- CRS-2M length 2 meter, includes power supply wires, with D15 / D9 male or CRS-2F female -connectors
- CRS-PB length 2 meter, includes power supply wires, with D15 / D9 male -connectors for RS-485 interface
- CRS-9 length 2 meters, with D9 male / D9 female -connectors
- CRS-TSU length 2 meters or 50 cm, with D15 male / D15 female connectors, to be used between SATELLINE-3AS or Epic radio modems and I-LINK 100
- CRS-NMS length 1.5 meters, with D15 male / 2 x D9 female connectors from Master modem to user system and NMS PC. Including power supply wires

**Please contact your local distributor to get more information regarding cable types.**







# Protocols

SATEL radio modems are compatible with all commonly used industrial protocols. Here are some examples of the protocols: ANSI, ASCII, CACTUS, COMLI, DNP 3.0 Serial & IP, 4 Exoline, HostLink, IEC 60870-101, IEC 60870-104, IEC 61850, Mewtocol, Modbus ASCII, Modbus RTU, Modbus TCP, Profibus DP, R-com, RP-570, RP-571, SATELLINK, S-bus, Siemens 3946 (R), SNMP, TCP/IP, SATEL NMS, Rockwell DF etc.

**Ask for more information from your local distributor.**

# Disclaimer

©2016 SATEL Oy. All rights to this catalogue are owned solely by SATEL Oy. (referred to in this catalogue as SATEL). All rights reserved. The copying of this catalogue (without the written permission from the owner) by printing, copying, recording or by any other means, or the full or partial translation of the manual to any other language, including all programming languages, using any electrical, mechanical, magnetic, optical, manual or other methods or devices is forbidden. SATEL reserves the right to change the technical specifications or functions of its products, or to discontinue the manufacture of any of its products or to discontinue the support of any of its products, without any written announcement and urges its customers to ensure, that the information at their disposal is valid. SATEL software and programs are delivered "as is". The manufacturer does not grant any kind of warranty including guarantees on suitability and applicability to a certain application. Under no circumstances is the manufacturer or the developer of a program responsible for any possible damages caused by the use of a program. The names of the programs as well as all copyrights relating to the programs are the sole property of SATEL. Any transfer, licensing to a third party, leasing, renting, transportation, copying, editing, translating, modifying into another programming language or reverse engineering for any intent is forbidden without the written consent of SATEL.

## IMPORTANT

SATEL PRODUCTS HAVE NOT BEEN DESIGNED, INTENDED NOR INSPECTED TO BE USED IN ANY LIFE SUPPORT RELATED DEVICE OR SYSTEM RELATED FUNCTION NOR AS A PART OF ANY OTHER CRITICAL SYSTEM AND ARE GRANTED NO FUNCTIONAL WARRANTY IF THEY ARE USED IN ANY OF THE APPLICATIONS MENTIONED.

# Distributors

## ARGENTINA BTW S.A.

+54 11 5032 0250  
nmileo@btwsa.com.ar  
www.btwsa.com.ar

**AUSTRALIA  
ROJONE PTY LIMITED**  
+61 2 9829 1555  
warren@rojone.com.au  
www.rojone.com.au

**AUSTRIA**  
See Germany

**BELGIUM**  
See The Netherlands

**BOSNIA AND HERZEGOVINA**  
See Croatia

**BRAZIL  
TRC TELECOM**  
+55 12 3797 6868  
adriano@trctelec.com.br  
www.trctelec.com.br

**IDEAL BRASIL**  
+55 15 99106 3505  
jaimilton.oliveira@idealbrasil.com.br  
www.idealbrasil.com.br

**CANADA  
MDA CONTROLS INC.**  
+1 905 845 3666  
orit.altman@mdacontrols.com  
www.mdacontrols.com

**CHINA P.R.  
SATEL CHINA CO., LTD**  
+86 20 8251 4925  
info@satel.cn  
www.satel.cn

**CROATIA  
MICRO-LINK D.O.O.**  
+385 1 363 6884  
microlink@microlink.hr  
www.microlink.hr  
*MICRO-LINK d.o.o is serving Croatia and Bosnia and Herzegovina*

**CZECH REPUBLIC  
CONTROLTECH S.R.O.**  
+420 321 7420 11  
info@controltech.cz  
www.controltech.cz

**DENMARK  
COMSYSTEM A/S**  
+45 49 139 693  
salg@comsystem.dk  
www.comsystem.dk

**EGYPT  
I.C.E.E.S**  
+20 2 2267 0427  
info@icees-eg.com  
www.icees-eg.com

**ESTONIA  
ALARMTEC AS**  
+372 6 511 500  
alarmtec@alarmtec.ee  
www.alarmtec.ee  
*Alarmtec AS is serving Estonia, Latvia and Lithuania.*

**FRANCE  
COMATIS**  
+33 1 3930 2900  
info02@comatis.com  
www.comatis.com  
*COMATIS is serving France and Northern Africa countries excluding Egypt*

**GERMANY  
WELOTEC GMBH**  
+49 2554 9130 00  
info@welotec.com  
www.SATEL.de  
*Welotec is serving Germany and Austria*

**GREECE  
INTELLIGENT AUTOMATION CONTROL  
SYSTEM SA.**  
+302 310 521 055  
info@controlsystem.gr  
www.iacs.gr

**HUNGARY  
CONTROLTECH S.R.O.**  
+36 23 445 900  
info@controltechhungary.hu  
www.controltechhungary.hu

**ICELAND  
NAUST MARINE HF**  
+354 414 8080  
haraldur@naust.is  
www.naust.is

**INDIA  
LOTUS WIRELESS**  
+91 891 276 1678  
info@lotuswireless.com  
www.lotuswireless.com

**INDONESIA**  
See Singapore

**IRAQ  
EXPERIOR PARTNERS FZ-LLC**  
+971 4 424 0500  
sales@ep-me.com  
www.ep-me.com

**IRELAND  
SIGMA WIRELESS  
COMMUNICATIONS LTD**  
+353 1 814 2100  
pkinna@sigma.ie  
www.sigmaxireless.com  
*Sigma Wireless Communications Ltd is serving Ireland and Northern Ireland.*

**ISRAEL  
ARROWMID GROUP LTD**  
+972 36 247 080  
info@arrowmid.com  
www.arrowmid.com

**ITALY  
SARTELCO SISTEMI S.R.L.**  
+39 039 629 051  
sistemi@sartelco.it  
www.sartelco.com

**KAZAKHSTAN  
AUTOMATION AND  
TECHNOLOGIES-SERVICE LTD**  
+7 727 277 4949  
info@automation-trade.com  
www.automation-trade.com

**KOREA  
THOMAS TRADING CO., LTD.**  
+82 31 467 8554  
system@thomas.co.kr  
www.thomas.co.kr

**LATIN AMERICA-CARIBBEAN  
SOLARES FLORIDA CORP**  
Tel +1-305-592 0593  
isolares@solaresflorida.com  
www.solaresflorida.com  
*Solares Florida is serving part of the Latin America and Caribbean countries.*

**LATVIA, LITHUANIA**  
See Estonia

**LUXEMBOURG**  
See The Netherlands

**MALAYSIA**  
See Singapore

**MEXICO  
ROSSBACH DE MÉXICO, S.A. DE C.V.**  
+52 1 555 147 0547  
ventas@rossbach.com.mx  
www.rossbach.mx

**MONTENEGRO**  
See Slovenia

**THE NETHERLANDS  
SATEL BENELUX B.V.**  
+31 255 820 009  
info@satelbv.nl  
www.nautikaris.com  
*SATEL Benelux is taking care of The Netherlands, Belgium and Luxembourg*

**NEW ZEALAND**  
See Australia

**NORTHERN AFRICA**  
See France

**NORWAY  
SATEL NORGE AS**  
+47 69 27 70 40  
produktinfo@satel.no  
www.satel.no

**PERU  
MOR SRL**  
+51 1 222 6185  
info@morsrl.com  
www.morsrl.com

**PHILIPPINES**  
See Singapore

**POLAND  
ASTOR SP. Z O.O.**  
+48 12 428 6300  
satel@astor.com.pl  
www.astor.com.pl

**PORTUGAL  
AEROSISTEMAS LDA**  
+351 21 396 2628  
aero@aerosistemas.pt  
www.aerosistemas.pt

**ROMANIA  
SC YARINA 3000 SRL**  
+40 72 228 9193  
office@yarina.ro  
www.yarina.ro

**RUSSIA  
KASSANDANA OOO**  
+7 495 640 8560  
alexander.samokhin@kassandana.ru  
www.satel.ru

**SAUDI ARABIA  
SAUDI TELECOMMUNICATION &  
POWER EST.**  
+966 13 820 0477  
abdulah@stpest.com  
www.stpest.com  
*Saudi Telecommunication & Power is serving Saudi Arabia, Kuwait, UAE, Bahrain, Qatar and Oman.*

**SERBIA**  
See Slovenia

**SINGAPORE  
SATEL (S.E.A.) PTE LTD**  
+65 6448 4162  
sales@satel-sea.com  
www.satel-sea.com  
*SATEL (S.E.A) Pte Ltd serves also Malaysia, Thailand, Indonesia and Philippines*

**SLOVAK REPUBLIC  
CONTROLTECH S.R.O.**  
+421 33 59138 11  
info@controltech.sk  
www.controltech.sk

**SLOVENIA  
METRONIK D.O.O**  
+386 1 514 0800  
info@metronik.si  
www.metronik.si  
*METRONIK d.o.o is serving Slovenia, Serbia and Montenegro*

**SOUTH AFRICA  
INTEGR8 & AUTOM8**  
+27 82 456 0902  
mark@satel.co.za  
www.i8a8.co.za  
*Integr8 & Autom8 locates in South Africa and serves Africa, excluding Northern Africa and Egypt.*

**CSTREAM**  
+27 12 664 4515  
info-cs@cstream.co.za  
www.cstream.co.za

**SPAIN  
SATEL SPAIN S.L.**  
+34 91 636 22 81  
info@satelspain.com  
www.satelspain.com

**SWEDEN  
INDUO AB**  
+46 8 659 43 00  
info@induowireless.com  
www.induowireless.com

**SWITZERLAND  
SATEL SWITZERLAND TUNCELLI CCS**  
+41 21 729 59 83  
ctuncelli@satelch.com  
www.satelch.com

**TAIWAN  
ENVIRONMENTAL  
SCIENCE & ENG'N CORP.**  
+886 2 2963 4300  
sales@esne.com.tw  
www.esne.com.tw

**THAILAND**  
See Singapore

**TURKEY  
BILKO AS**  
+90 212 320 1383  
bilko@bilko-automation.com  
www.bilko-automation.com

**UKRAINE  
NEW TECHNOLOGIES CJSC**  
Tel +8 044 499 77 15  
satel@ntech.kiev.ua  
www.ntech.kiev.ua

**UNITED KINGDOM  
SADERET LTD**  
Tel +44 1624 880366  
andy@saderet.co.uk  
www.saderet.co.uk

**XL SYSTEMS LTD**  
+44 1883 622 778  
sales@xls.co.uk  
www.xls.co.uk

**UNITED STATES  
SATEL U.S.A.**  
+1 800 915 1109  
info@satelusa.com  
www.satelusa.com

**URUGUAY  
AEROMARINE S.A.**  
+598 2 916 6456  
mjn@aeromarine.com.uy  
www.aeromarine.com.uy

**VENEZUELA  
FERRUM ENERGY SOLUTIONS**  
+58 0212 241 13 60  
agalipolli@ferrum-ca.com  
www.ferrum-ca.com

**VIETNAM  
TRIEUHA  
TELECOMMUNICATIONS**  
+84 4 3572 0699  
tuanav@gmail.com  
www.trieuha.com

# Contact us

## ***SATEL***

SATEL, Meriniitynkatu 17  
P.O.Box 142, FI-24101 Salo  
FINLAND  
Tel. +358 2 777 7800  
Fax +358 2 777 7810  
info@satel.com



**SARTELCO® SISTEMI SRL**

Via Torri Bianche, 1  
20871 Vimercate (MB)

Tel. +39- 039- 62905.1 Fax. +39- 039- 62905.99  
e-mail sistemi@sartelco.it Web [www.sartelco.it](http://www.sartelco.it)

