

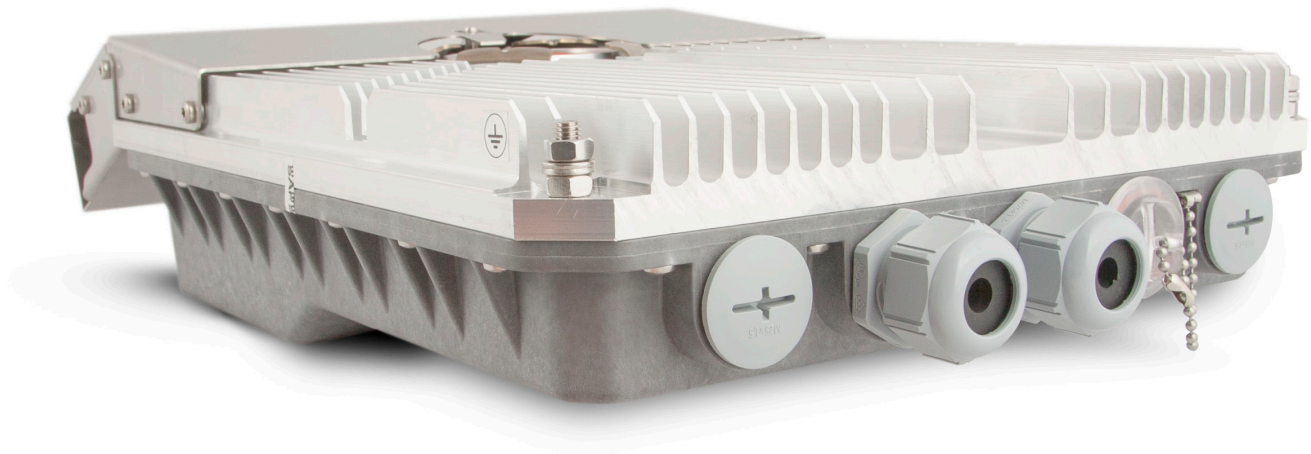


# Integra-GS

carrier-grade microwave radio,  
delivering up to 1Gbps Full Duplex



- SAF Tehnika most powerful modem yet with 3.5MHz to 60MHz channel bandwidth and up to 2048QAM modulation support for universal network upgrades in a compact, single hardware design.
- Full outdoor unit includes radio, modem, Ethernet network processor, and PoE splitter with surge arrestor.
- SFP ports for easy installation – choose single-mode or multi-mode fibre by changing SFP's, add fibre optic cabling later.
- Advanced Ethernet network processor features AES encryption, efficient header compression, advanced Quality of Service, and MEF compliant functionality.
- Built-in protected 2+0 layer 1 link bonding provides double capacity up to 982 Mbps and up to 1Gbps with header compression.



Integra-GS is an unbelievably light, energy efficient carrier-grade system that exemplifies an outstanding return on smart engineering - the synergy of high competence in radio electronics and materials science. Slip-fit design allows integration with existing high performance antenna systems or integration with 2+0 aggregation setups for up to 982Mbps Full Duplex capacity without header compression. Gigabit Power over Ethernet (PoE) port defines simple installation, while dual SFP slots enable fibre optic installation – giving the user ultimate flexibility in cable design.

Capacity	up to <b>1Gbps</b> with Header compression
Frequency bands	6GHz, 7GHz, 11GHz, 15GHz, 17GHz UL, 18GHz, 23GHz, 24GHz UL, 25GHz, 26GHz, 28GHz, 32GHz*, 38GHz, 42GHz and more*
Modulation	4QAM / 16QAM / 32QAM / 64QAM / 128QAM / 256QAM / 512QAM / 1024QAM / 2048QAM with Hitless ACM
Configurations	1+0, 2+0 link bonding
<b>Channel bandwidth</b>	
ETSI	from 3.5MHz up to 56MHz, up to 472 Mbps
FCC	from 5MHz up to 60MHz, up to 491 Mbps
<b>Gigabit Ethernet</b>	
1x RJ-45	Electrical with built-in PoE splitter and surge arrestor
2x SFP	Fibre Optics
<b>Service ports</b>	
3.5mm	Audible alignment and RSSI
USB B-Type	Terminal Access
LED	Power On, Link Synchronization, RSL
Managed Gigabit Switch functionality	802.1Q VLANs with QoS including WRED, shaping and DWRR, Spanning Tree Protocol, Jumbo frames and more*
Management	In-band, SNMP v1/2c/3, SSH, Telnet, HTTPS, Serial, RADIUS, Network Time Protocol
Carrier Ethernet functionality	Provider Bridging, MEF9&14, High Efficiency Header Compression, AES 256-bit encryption, MPLS EXP-bit QoS, SyncE
Performance monitoring	Performance graphs, constellation diagram, alarms, detailed counters
Antenna type	External, Slip-fit
Form factor	235 x 250 x 72 mm / 9.26" x 9.85" x 2.84", 2.9 kg / 6.4 lbs (15-42GHz) 280 x 437 x 100 mm / 11.02" x 17.2" x 3.9", 6.5 kg / 14.3 lbs (6-11GHz)
Temperature range	-33 ... +55 °C / -28 ... +130 °F

\* Please contact SAF Tehnika representative for more information



**SARTELCO® SISTEMI SRL**

Via Torri Bianche, 1  
20871 Vimercate (MB)

Tel. +39- 039- 62905.1 Fax. +39- 039- 62905.99  
e-mail sistemi@sartelco.it Web [www.sartelco.it](http://www.sartelco.it)

For more detailed information about SAF products visit [www.saftehnika.com](http://www.saftehnika.com) or contact your SAF representative [info@saftehnika.com](mailto:info@saftehnika.com)  
Product features may vary between different models and configurations. They are subject to change without prior notice.