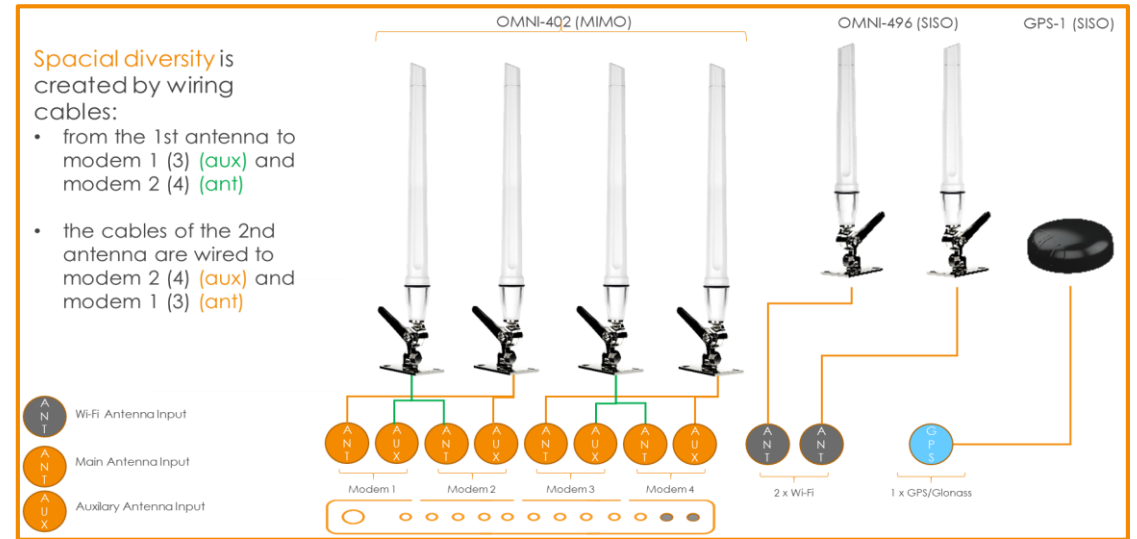
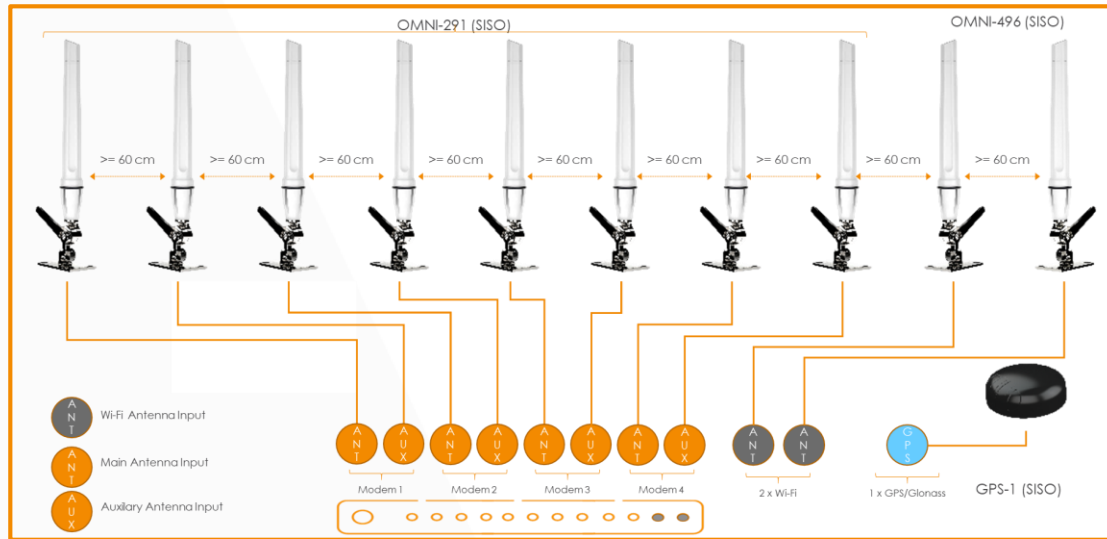


COME INSTALLARE IN MODO CORRETTO



- Spacial diversity is created by wiring cables:
- from the 1st antenna to modem 1 (3) (aux) and modem 2 (4) (ant)
 - the cables of the 2nd antenna are wired to modem 2 (4) (aux) and modem 1 (3) (ant)



One GPS antenna is not connected.

2 MIMO-3-V2-14 and -17 have 4 LTE/5G Antennas inside

Ideal for CAT-18 routers

Ideal for multiple mode routers

