

4G-Antennas - WAO-GULOW-2Gxxx-xxxM2

DATASHEET



Standard angle antenna for wall mounting for 4G applications

The WAO-GULOW-2Gxxx-xxxM2 antenna is the basic antenna for fixed installations. It combines cost efficiency with good reception and flexible installation in both indoor and outdoor areas. It is by far the most sold accessory to our TK800 routers and is used for a wide range of applications.

- Standard 4G wall mount antenna for indoor and outdoor use
- Robust design for demanding environmental conditions
- Easy installation because groundplane independent
- High performance with up to 3 dBi antenna gain at low VSWR

MODELS	DESCRIPTION	ANTENNA CONNECTOR	ANTENNA CABLE
WAO-GULOW-2G500-SMAM2	4G wall mounting antenna	SMA (m)	500 cm
WAO-GULOW-2G999-SMAM2	4G wall mounting antenna	SMA (m)	1000 cm
WAO-GULOW-2G500-TNCM2	4G wall mounting antenna	TNC (m)	500 cm
WAO-GULOW-2G999-FAKDM2	4G wall mounting antenna	FAKRA D (m)	1000 cm

4G-Antennas - WAO-GULOW-2Gxxx-xxxM2

PRODUCT FEATURES



4G/LTE support

Supports all 4G/LTE frequency bands.



Omnidirectional antenna

Omnidirectional radiation characteristic ideal for most applications.



Frequency range

This antenna offers 698 - 960 MHz and 1.710 - 2.700 MHz frequency range.



Antenna gain

3.4 dBi antenna gain.



IP67 protection

Suitable for outdoor use with IP67 protection against water and dust.

4G-Antennas - WAO-GULOW-2Gxxx-xxxM2

SPECIFICATIONS

WAO-GULOW-2GXXX-XXXM2	
Antenna elements	1 x 4G
Frequency range	698-960/1710-2700MHz
Antenna gain	3.4 dBi
Antenna cable	5/10 m (LMR195)
Antenna connector	Standard: SMA(m)
Compatible with	GSM/GPRS/EDGE, UMTS, 4G, WIFI (2.4 GHz), Bluetooth, Zigbee, LoRa, Sigfox, 869 MHz

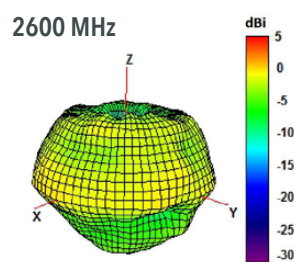
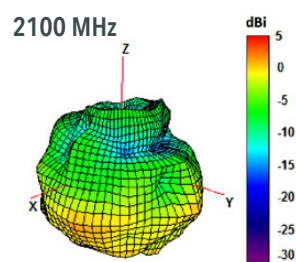
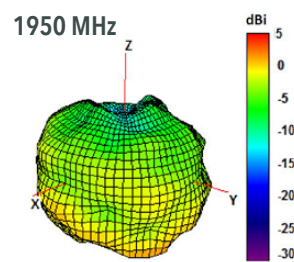
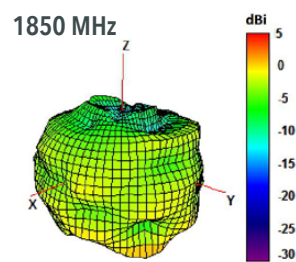
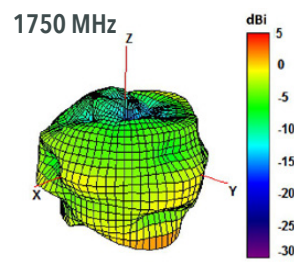
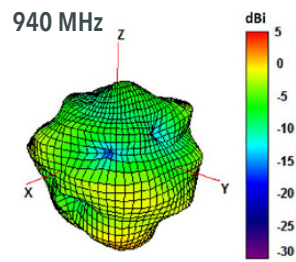
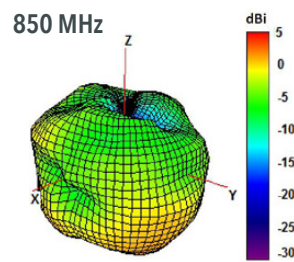
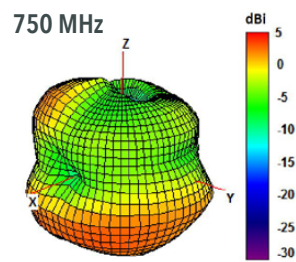
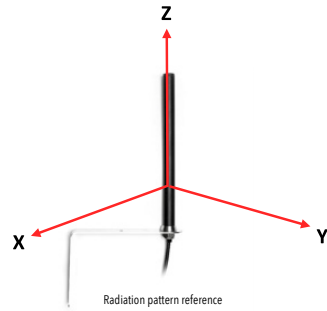
GENERAL INFORMATION	
Antenna type	4G-Antenna
Construction type	Rod antenna
Application area	Indoor/Outdoor
Radiation characteristic	Omnidirectional
Integrated Antenna elements	1 x 4G
Groundplane needed?	No
GSM/GPRS/EDGE- frequencies	850 / 900 / 1800 / 1900 MHz
4G-frequencies	700 / 800 / 1800 / 2100 / 2600 MHz
WiFi-frequencies	2.4 GHz
License-free bands	869 MHz range
Gain (typical)	3.4 dBi
VSWR	<1.4:1
ELECTRICAL CHARACTERISTICS	
Transmission power (max)	25 W
Impedance	50 Ohm
Polarization	Linear
PHYSICAL CHARACTERISTICS	
Material	PC/ABS, UV-Stable
Dimensions	36 x 325 x 155 mm (W x H x D)
Protection class	IP67
Mounting options	Wall mounting
Operating temperature range	-40 - +85°C

ELECTRICAL CHARACTERISTICS

FREQUENCY RANGES (MHz)	RETURN LOSS (dB)	VSWR	GAIN		EFFICIENCY (%)
			MAX (dBi)	TYPICAL (dB)	
698-960	~-16	~1.4:1	~3.4	~-1.8	~67
1710-2170	~-16	~1.4:1	~2.5	~-2.7	~54
2500-2700	~-16	~1.4:1	~1.0	~-3.0	~50

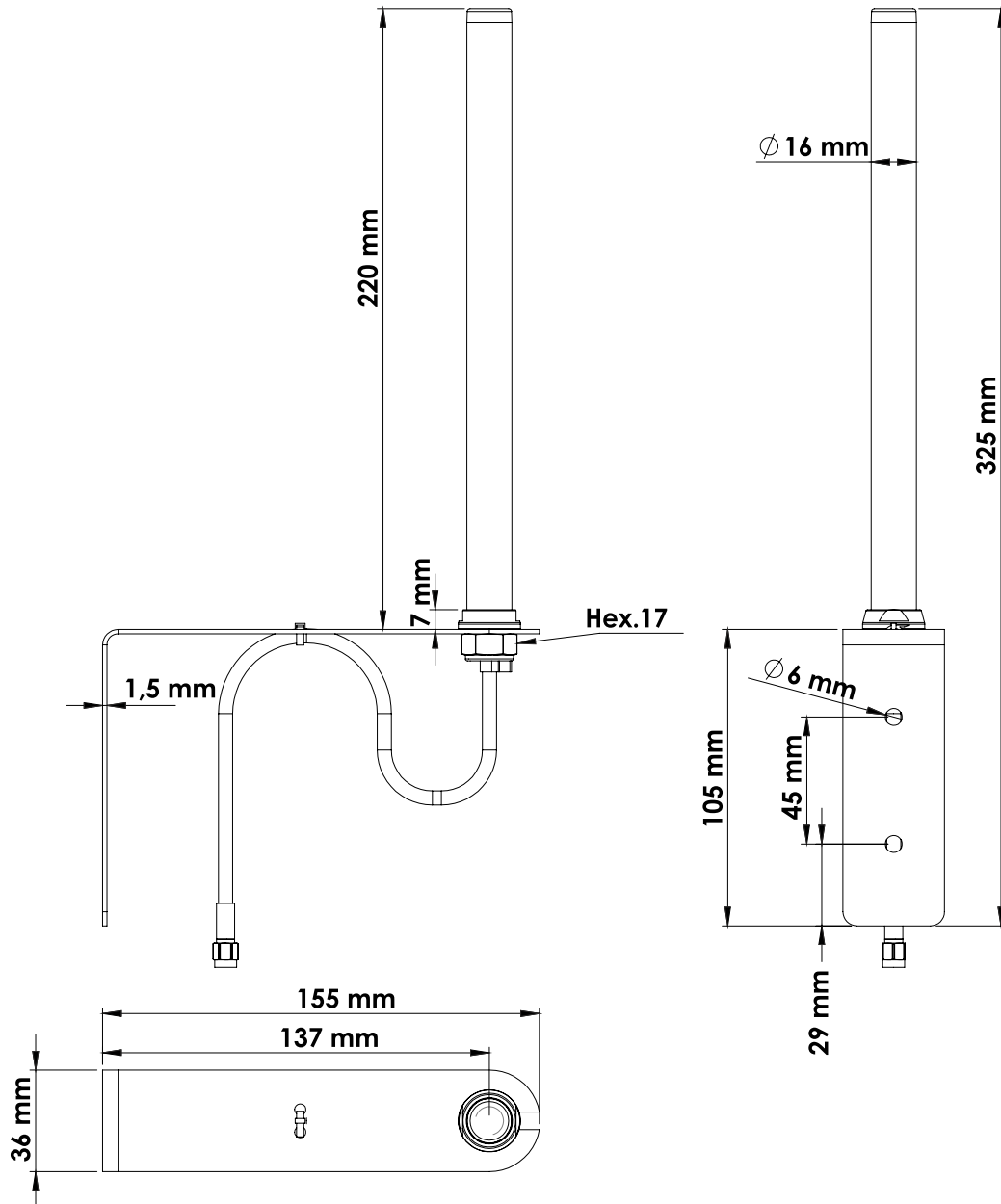
4G-Antennas - WAO-GUL0W-2Gxxx-xxxM2

RADIATION PATTERN



4G-Antennas - WAO-GUL0W-2Gxxx-xxxM2

PRODUCT DIMENSIONS (MM)



4G-Antennas - WAO-GULOW-2Gxxx-xxxM2

ACCESSORIES ANTENNA CABLE



Antenna cable - Configurator

With the Welotec cable configurator it is easy, to find the right coax cable for your needs.

Choose your desired cable from a large selection on cable types and combine it with the suitable connection.

Available connections:

SMA, RP-SMA, TNC, RP-TNC, BNC, N

Available cable types:

RG174, RF195, Aircell 5, RG58, RG223, H155 PE, Aircell 7